



CHOCOLATE BY THE BALD MAN  
MAX BRENNER

# MAX BRENNER CHOCOLATE BAR MENU

## SUCKAO

**CREATE YOUR OWN HOT CHOCOLATE EXPERIENCE** 6.80

Choose your chocolate (Milk / Dark / White / Ruby) to melt your ideal ratio in warm milk then sip to enjoy your very own creation

## HOT CHOCOLATES

Milk / Dark / White & served in the Hug Mug

**CLASSIC HOT CHOCOLAT** 6.20

**ITALIAN THICK** 6.60

Decadently thick hot chocolate with vanilla cream

**AMERICAN MARSHMALLOW** 6.60

Creamy chocolate with floating marshmallows

**CRUNCHY WAFFLE BALLS** 6.60

Classic chocolate with the twist of crunchy waffle balls

**FLAVOURED CHOCOLATE** 6.60

Mocha / Mexican Spicy / Mint / Salted Caramel / Coconut

**OTT HOT CHOCOLAT** 11.00

Supersized hot chocolate topped with a chocolate drizzled gooey marshmallow pillow, served with whipped cream & crunchy waffle balls

## ICY CHOCTAILS

Blended with crushed ice & served in the Alice Cup

**WHIPPED CHOCOLATE** 8.50

Milk / White / Dark

**FRAPPE** 8.80

Banana / Mocha

**PEANUT BUTTER ICED CHOCKIE** 8.80

Rich nutty icy chocolate frappe

**COOKIESHAKE** 8.80

White chocolate blended with cookie crumbs & caramelised pecans

**COOL IT CHAI** 8.80

White chocolate & vanilla ice cream frappe with aromatic chai notes

**NEW YORK ICED COFFEE** 8.50

Icy blend with vanilla ice cream & a shot of Max's specialty coffee

**GRANITA** 7.80

Passionfruit & Fresh Strawberries / Fresh Mint & Lime

## COFFEE & TEA

**CAPPUCCINO** 4.00

Served in the Kangaroo Cup

**LATTE / FLAT WHITE** 4.00

**MACCHIATO / ESPRESSO /** 3.70

**LONG BLACK**

**BABYCINO** 2.20

**AFFOGATO** 5.00

Max's specialty coffee served over delicious ice cream

**ICED LATTE** 6.50

**ICED LONG BLACK** 5.50

**CHAI LATTE** 4.50

Creamy & aromatic, sprinkled with cinnamon

**WHITE CHOC CHAI** 6.70

Spicy chai blend infused with white chocolate

**TEA** 4.50

Selection of tea infusions

## MILKSHAKES

Blended with ice cream & served in the Alice Cup

**80s MILKSHAKE** 9.20

Chocolate milkshake topped with vanilla ice cream & a pure chocolate shell

**CHOC-FUDGE BROWNIE** 9.20

Nutty brownie & vanilla ice cream milkshake, topped with chocolate drizzled whipped cream

**SALTED CARAMEL** 8.80

Vanilla milkshake with salted caramel

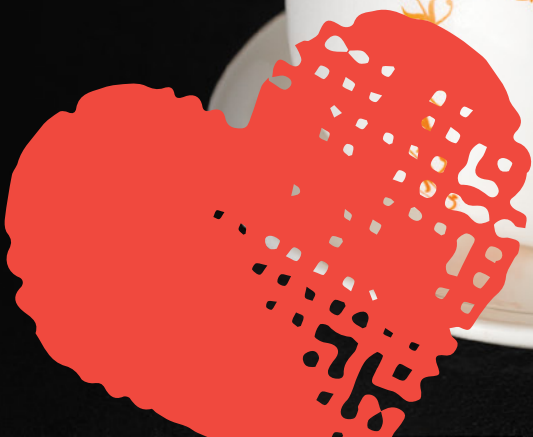
**MILKBAR CLASSICS** 8.80

Chocolate / Vanilla / Bubblegum

**FRUTTI** 9.00

Banana / Strawberry

SOY / LARGE /  
STRONG 0.50  
ALMOND 0.60  
WHIPPED CREAM 1.70



## DECADENT PIZZAS

Base available in  
Milk / Dark / White / Ruby

<b>BAD BOY BROWNIE</b> 🍫	21.00
Rich brownie chunks, fresh strawberries, caramelised pecans, white chocolate drops, topped with ice cream & pure chocolate drizzle	
<b>CHOC-CRUNCH</b> 🍫	18.50
Caramelised pecans, crunchy cornflakes, gooey marshmallows & white chocolate drops	
<b>COOKIES &amp; CREAM</b>	21.00
Cookie crumbs, gooey marshmallows, white chocolate & crunchy waffle balls, topped with whipped cream swirls	
<b>MIDNIGHT PEANUT NUTTER</b> 🌿🍫	21.00
Peanut butter, dark chocolate, fresh strawberries, banana & crunchy cornflakes	
<b>CHOC-BANANA</b> 🍫	18.50
Banana, caramelised pecans & gooey marshmallows	
<b>HAWAIIAN</b>	21.00
Fresh pineapple, cookie crumbs & crunchy cornflakes, drizzled with pure white chocolate	

## MAX I-SCREAM

<b>CHOC-FUDGE BROWNIE SUNDAE</b> 🍫	15.00
Ice cream topped with rich brownie chunks & caramelised pecans, served with crunchy waffle balls & a pot of pure melted chocolate	
<b>I-SCREAM MAX-WICH</b>	14.00
Ice cream hugged between soft baked double chocolate cookies	
<b>BANANA SPLIT WAFFLE SUNDAE</b> 🍫	15.00
Ice cream topped with toasted waffle cubes, crunchy waffle balls, gooey toffee & fresh banana, served with caramelised pecans & a pot of pure melted chocolate	
<b>COOKIE DOUGH SUNDAE</b>	15.00
Ice cream with a ball of choc-chip cookie dough & cookie crumbs, topped with a gooey marshmallow pillow, served with a pot of pure melted chocolate	

## MAX-IMISE IT

<b>STRAWBERRY</b>	3.20
<b>BANANA / PINEAPPLE</b>	3.20
<b>WHIPPED CREAM</b>	1.70
<b>MARSHMALLOWS</b>	0.80
<b>WAFFLE BALLS</b>	2.20
<b>CARAMELISED PECANS</b>	2.20
<b>ICE CREAM</b>	3.20
Vanilla / Chocolate	
<b>POT OF PURE MELTED CHOCOLATE</b>	2.90
Milk / Dark / White / Ruby	

## SWEET ICONS

<b>TUTTI FRUTTI WAFFLE</b>	SINGLE 15.00 DOUBLE 20.00
Belgian waffle/s served with ice cream, fresh strawberries & banana	
<b>CRÊPE - BANANA PRALINE</b> 🍫	18.00
Filled with banana & hazelnut praline, served with ice cream	
<b>CRÊPE - STRAWBERRIES &amp; CREAM</b>	18.00
Filled with fresh strawberries & whipped cream	
<b>CHOCOLATE SOUFFLÉ</b>	10.70
With a melting centre	
<b>WHITE CHOCOLATE CRUMB CHEESECAKE</b>	12.00
Light, white chocolate cheesecake on a crumbly biscuit base, served with fresh strawberries & a pot of pure melted chocolate	
<b>STRAWBERRY CHOCOLATE DIP</b> 🌿	9.00
Dip fresh strawberries in pure melted chocolate	
<b>RUBY CACAO BEAN</b> 🍫	12.00
Ruby chocolate & raspberry mousse with lychee cubes on a nutty cake base	

## MAX'S PASTRY

<b>CHOC-NUT FUDGE BROWNIE</b> 🍫	9.20
Fudgy chocolate brownie studded with walnuts	
<b>BROWNIE TO THE MAX</b> 🍫	14.50
Topped with a pillow of gooey toasted marshmallow & ice cream, served with caramelised banana & whipped cream	
<b>WHITE CHOC RASPBERRY BLONDIE</b>	6.50
Flourless white chocolate brownie with citrus notes, dotted with raspberries & caramelised white chocolate buttons	
<b>SALTED CARAMEL TART</b>	6.50
Buttery pastry shell filled with salted caramel & wafer flakes, topped with dark chocolate ganache	
<b>CHOCOLATE CINNAMON BABKA</b>	7.30
Brioche swirled with cinnamon & chocolate, served with a pot of pure melted chocolate	

## MAX 'N GO

<b>BELGIAN WAFFLE</b>	6.20
Drizzled with pure melted chocolate	
<b>CHOC-CHIA TURMERIC BAR</b> 🌿🍫	4.50
Flourless, dairy-free bar with turmeric, almonds, rolled oats & chia seeds, drizzled in pure dark chocolate	
<b>SALTED CARAMEL COOKIE</b>	4.20
Soft-baked cookie with caramel chocolate & rock salt	
<b>DOUBLE-CHOC COOKIE</b>	4.20
Soft-baked double chocolate cookie	
<b>CHOCOLATE LICK</b> 🌿	2.90
Your personal pot of pure melted chocolate in Milk, Dark, White or Ruby	
<b>CUPCAKE - RUBY</b>	4.50
Vanilla cupcake topped with ruby chocolate icing & shavings	
<b>CUPCAKE - DOUBLE CHOCOLATE</b> 🌿🍫	4.50
Double dark chocolate, flourless cupcake with chia seeds, topped with roasted coconut & almonds	
<b>CUPCAKE - CHOC-VANILLA</b> 🍫	4.50
Chocolate cupcake with vanilla icing sprinkled with crunchy waffle balls	
<b>BANANA BREAD</b>	5.90
Flourless banana bread made with 50% banana, served with a pot of pure melted chocolate	

## SHARING IS CARING

<b>CHOCOLATE FONDUE FOR TWO</b> 🌿	21.00
Choose 2 towers of pure melted chocolate: Milk / Dark / White / Ruby	
Choose 2 dipping bowls: Strawberry & Banana / Choc Cake & Pineapple / Banana Bread & Marshmallows	
<b>ULTIMATE CHOCOLATE FONDUE</b>	39.00
Dip fresh fruits, marshmallows & cakes in 4 towers of pure melted chocolate	
<b>WAFFLE CELEBRATION</b> 🍫	26.00
Created for special celebrations, enjoy three Belgian waffles, piled high with toppings to wow	
<b>SHARING PLATTER</b>	29.50
Enjoy the best of Max, featuring Belgian waffle, soufflé, crêpe & a fondue tower to dip fresh strawberries, banana, marshmallows & banana bread	

## Allergy Advice

All our products may contain traces of nuts, gluten & milk. Please notify our team of any allergies so that we may advise you accordingly.

🌿 VEGAN OPTION AVAILABLE  
🍫 CONTAINS NUTS

10% SURCHARGE APPLIES ON PUBLIC HOLIDAYS

MAXBRENNER.COM.AU

JAN2020